

Installation Instruction

Assembly List



(1) 4pcs



(2) 4pcs



(3) 8pcs



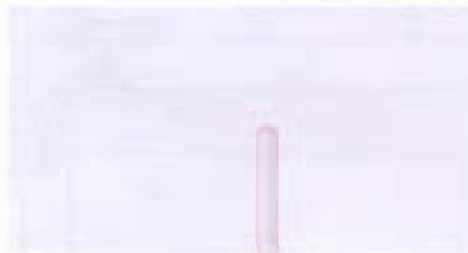
(4) 2pcs



Step 1



Drill two holes in the wall or ceiling with an electric drill.



Step 2



(1) Insert the nut into the hole and tighten.

(2) Insert the screw through the **brackets** into the nut and tighten.

Step 3

Fasten the bracket and the end cap with screws.



Attention

- Before rolling up the screen, make sure there is no debris or other material on the screen surface.

Caution: Wiring has to be carried out by a trained person only

Wiring diagram

